

Policy Formulation

Course: **Kebijakan Pembangunan (Development Policy)**

Lecturer: **Yohanes Novi Armunanto, S.E., M.E.**

Department of Development Economics, Faculty of Economics and Business,
University of Lampung

MARCH 10, 2026



Stages of the Public Policy Process

According to **William N. Dunn**, the public policy process consists of several interrelated stages for resolving public problems.



What Is Policy Problem Formulation?

Policy problem formulation is the process of **identifying, defining, and analyzing** public problems that require government intervention.

"Policy analysis begins with the identification of public problems that require government action."

— Harold D. Lasswell



This means that **no policy can be created without a thorough understanding of the actual problem** occurring in society. Accurate problem identification is the foundation of effective governance.

Steps in Policy Problem Formulation

The process of formulating a policy problem typically involves the following steps:

1

Problem Identification

Discovering and recognizing problems occurring within society.

2

Cause Analysis

Determining the root factors and conditions that cause the problem.

3

Priority Setting

Not all problems can be solved at once — government identifies the most urgent issues first.

4

Policy Alternatives

Once the problem is clear, government drafts several alternative solutions for consideration.

The Importance of Accuracy in Policy Formulation



Accuracy in policy formulation is **critically important** because public policies are created to solve real problems in society. If the formulation is inaccurate, the resulting solutions will also fail to address the problem effectively.

Therefore, the policy formulation process must be grounded in:

Accurate Data

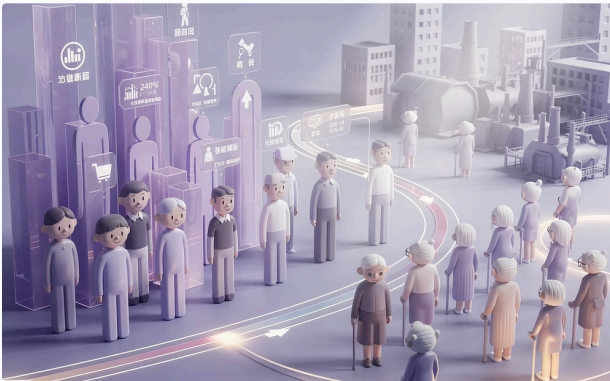
In-Depth Analysis

Social, Economic & Political Understanding

- ❑ A policy built on a misdiagnosed problem is like prescribing medicine for the wrong disease — it may cause more harm than good.

Real-World Cases: When Policy Formulation Goes Wrong

These cases illustrate the consequences of **inadequate policy formulation**, when problems are misunderstood or long-term impacts are ignored.



One Child Policy — China (1979)

Goal: Control rapid population growth to stabilize economic development.

Unintended Impacts: Decline in working-age population, aging population surge, and gender ratio imbalance.

Lesson: Long-term demographic consequences were not adequately considered in the formulation stage.



Fuel Subsidy Policy — Venezuela

Goal: Provide affordable fuel for citizens.

Unintended Impacts: Massive strain on the national budget, fuel smuggling to neighboring countries, and severe economic distortion.

Lesson: Populist policies without long-term economic calculation can cripple national finances.

❏ **Conclusion:** Misunderstanding the problem, lacking data, or ignoring long-term impacts can render a policy ineffective — or even create new problems.



Group Discussion: Public Policy Formulation Case Studies

Each group must: **(1)** Identify the main problem, **(2)** Analyze its causes, **(3)** Formulate 3 policy alternatives, and **(4)** Determine the best policy.

GROUP 1

Student Dependence on AI

Growing use of tools like ChatGPT for assignments and essays raises concerns about plagiarism, declining critical thinking, and academic integrity.

GROUP 2

Campus Smoking Ban Policy

Despite smoke-free zone rules, students continue smoking in canteens, gardens, and gathering areas, causing discomfort and health risks for non-smokers.

GROUP 3

Healthy Campus Canteen Policy

Many campus canteen foods are high in oil, sugar, and preservatives with poor hygiene standards, posing long-term health risks to students.